

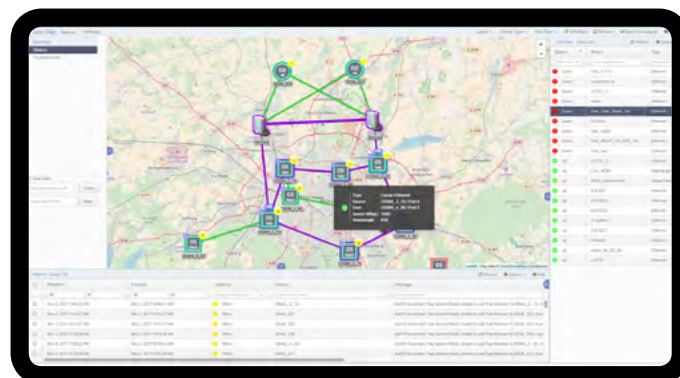


## Pro-Vision®

### Orchestration and service management platform

In today's competitive and changing environment, communication service providers (CSPs) need tools that enable them to rapidly reduce new service activation times, increase the quality of service they offer and, at the same time, improve their diagnostic capabilities in order to minimize network faults and reduce repair time.

Our Pro-Vision® orchestration and service management platform helps CSPs meet these challenges head on. With a clean, modern and intuitive user interface network, operators can quickly and easily visualize their network's topology and manage its state, track the status of individual services and manage individual devices. Faults can be immediately identified and affected services accessed right from the home screen, while new services can be activated in minutes with just a few clicks. When deployed in multi-vendor networks, our innovative Pro-Vision® software offers operators a powerful RESTCONF northbound API. It takes advantage of performance offered by a web-enabled REST interface while leveraging standards-based YANG models. This enables seamless integration with multi-domain orchestration platforms. It's the ideal solution for bringing new services to market in less time and reducing operational costs.



#### Your benefits

✔ **Real-time performance monitoring**

End-to-end visibility into service performance to ensure that customers' s SLAs are met

✔ **Open northbound API**

Based on the RESTCONF protocol, enables integration with other orchestration platforms as well as OSS/BSS platforms and business applications

✔ **Proactive fault management**

Automated fault mgmt. and troubleshooting tools provide early fault detection and identification

✔ **Extensive inventory and change mgmt. tools**

Automated tracking of operational status, capabilities, serial numbers, and firmware versions; scheduled configuration backups and firmware updates

✔ **Taskflow-oriented user interface**

Fast access to key decision-making and troubleshooting information

✔ **Zero touch configuration**

Automates device activation and can dramatically accelerate Carrier Ethernet service deployments

## High-level specifications

### Network awareness

- Modern, work flow-based web user interface
- Multi-layer awareness and visualization
- Physical-wavelength-OTN-Ethernet layers
- Geo and logical network visualization

### Service mgmt. and reporting

- Simplified end-to-end service provisioning
- Automatic path discovery and node provisioning
- Extensive use of profiles and templates
- Real-time and historical reporting

### SDN integration

- Standards-based IETF RESTCONF northbound interface
- Support for industry standard models
- MEF Presto NRP Support
- ONF TR-527 T-API Support

### Troubleshooting

- Extensive thresholding and alarming
- Customizable warning and fault thresholds
- Real-time service and NE status awareness
- Historical monitoring and analysis tools

### Change and config. mgmt.

- Zero touch provisioning and NE deployment
- Scheduled bulk configuration backup
- Scheduled bulk NE firmware upgrades
- Extensive inventory management and export

### Carrier grade

- Highly scalable platform – tens of thousands of nodes
- Resilient, distributed architecture
- Built-in per-customer and per-service reporting
- Modern SDN interfaces for simplified integration

## Applications in your network

### Advanced orchestration and management of Carrier Ethernet services

- Simplify delivery of next-generation dynamic services in SDN-enabled networks
- Optimize available network resources with advanced analytics
- Faster time-to-market for new services
- Dramatically improve service restoration times with enhanced troubleshooting tools and real-time reporting on service performance
- Decrease network OPEX with automation of network operations



For more information please visit us at [www.advaoptical.com](http://www.advaoptical.com)  
© 08 / 2018 ADVA Optical Networking. All rights reserved.

Product specifications are subject to change without notice or obligation.

**ADVA**<sup>TM</sup>  
Optical Networking