

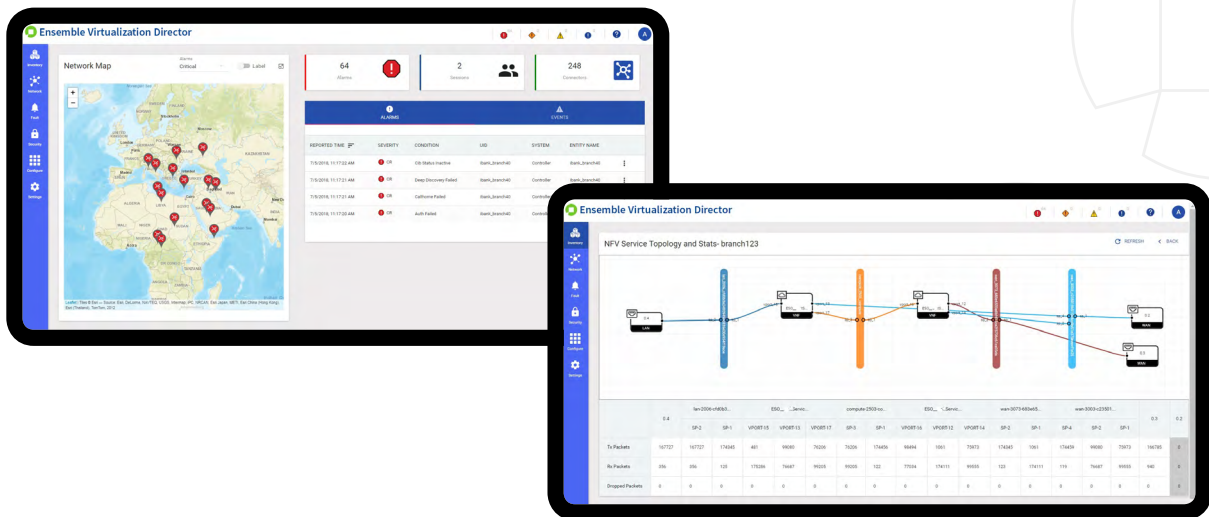


Ensemble Virtualization Director

Putting the M in MANO

NFV deployment requires NFV orchestration, but it also needs a sophisticated management platform. That's where Ensemble Virtualization Director comes in. As network infrastructure, client services and overall network complexity evolve, operators need a network management solution that can support automated deployment and management of NFV-based services, including universal CPE (uCPE) and sophisticated service chains including virtualized SD-WAN.

Ensemble Virtualization Director is a centralized uCPE management solution that provides the flexibility, scalability and high-availability features necessary for end-to-end configuration, management and surveillance of virtualized network infrastructure and services.



Your benefits

✔ Zero touch provisioning (ZTP) of uCPE

Ensemble Virtualization Director has an intuitive and simplified ZTP user interface to rapidly deploy new uCPEs. It supports integration with customer portal or OSS/BSS systems. Design phase activities and deployment phase activities are clearly separated.

✔ NFV dashboard

Rich and responsive user interface of Ensemble Virtualization Director provides single pane of glass view of NFV operational data from all layers. It also provides REST APIs to integrate the same into northbound interfaces.

✔ Visualization and control

Network designer facilitates creation, deployment and management of overlay networks. Service topology visualizer provides end-to-end view of traffic flow.

✔ Multi-cloud service chaining through overlay

Ensemble Virtualization Director includes an SDN controller component that automates end-to-end traffic flow and the associated overlay networking details.

✔ Monitoring and troubleshooting

User dashboards provide a simplified view of performance metrics and statistics. Collection of alarms and events plus sophisticated diagnostic tools ensure maximum uptime for services.

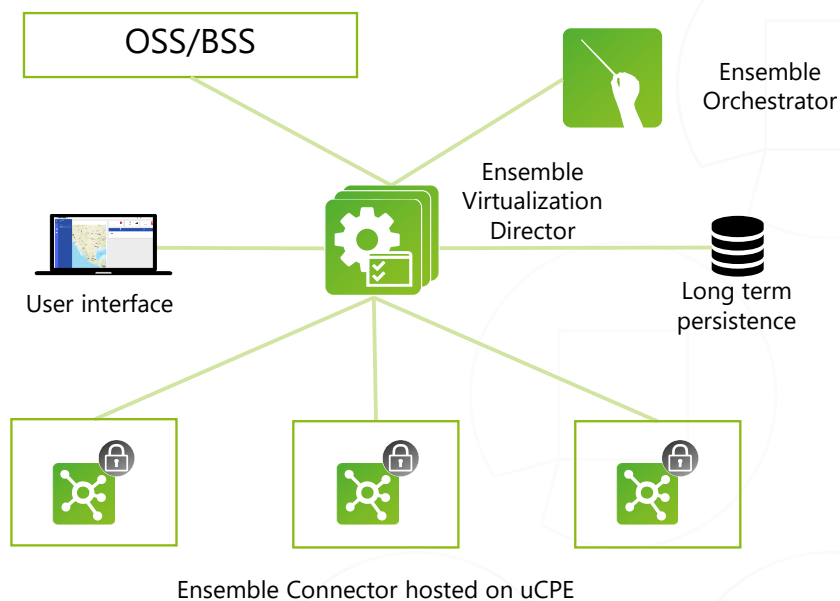
✔ Inventory and software management

Powerful tools for managing physical inventory of edge nodes as well as upgrade/downgrade of the NFV infrastructure software.

High-level features

<p>General</p> <ul style="list-style-type: none"> • Advanced FCAPS capabilities for NFV-based services and infrastructure • Pre-integrated with Ensemble Orchestrator and Ensemble Connector 	<p>Visualization</p> <ul style="list-style-type: none"> • Network designer for VPN overlay deployments • Service topology views that integrate NFVI and cloud 	<p>VM-based architecture</p> <ul style="list-style-type: none"> • Compute/storage platform agnostic • Inherently designed for scalability and high availability (geographical redundancy) • True pay-as-you-grow infrastructure
<p>Security</p> <ul style="list-style-type: none"> • Multi-domain/tenancy security • Local and LDAP options for authentication • Encrypted communication 	<p>Protocols</p> <ul style="list-style-type: none"> • REST-based southbound and northbound interfaces • NETCONF integration to third-party devices • FTP/SFTP/SCP/HTTPS 	<p>Monitoring and reporting</p> <ul style="list-style-type: none"> • PM collection templates and key performance indicators (KPI) collection • Extensive graphing and charting capabilities • Data consolidation and exporting

Applications in your network



Applications include:

- uCPE
- SD-WAN
- Secure cloud connectivity
- ZTP



For more information please visit us at www.advaoptical.com
© 12 / 2018 ADVA Optical Networking. All rights reserved.

Product specifications are subject to change without notice or obligation.