

Ensemble Controller

Ensemble Packet Director

Fast service activation and total network control

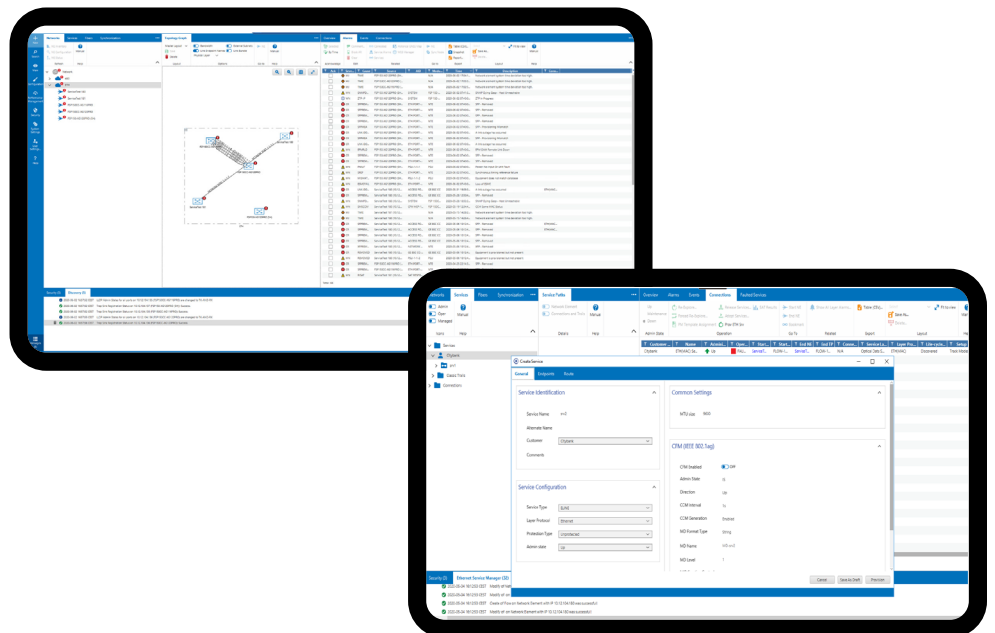
Benefits

- Comprehensive network insights**
 User interfaces with clear and transparent reporting of network status and services quality plus comprehensive alarm management
- Powerful GUI**
 Graphical and table-based access to packet networks enables operational teams to act quickly and efficiently
- SLA assurance**
 Tools for monitoring and gathering of performance information provide real-time and historic SLA reports
- Fast and efficient service activation**
 An intuitive GUI simplifies the provisioning of services significantly; no configuration of intermediate nodes is required
- Supporting any topology**
 Port- and VLAN-based Ethernet services in line, ring, LAN or tree configurations

Overview

In a cloud-centric world, communication service providers need to provide connectivity in a highly dynamic way. The growing number of service activations and service modifications is steadily increasing the workloads of operational teams. What's more, with complexity mounting, the risk of failure is also on the rise. Our Ensemble Packet Director simplifies service provisioning and operation with end-to-end control and powerful graphical user interfaces (GUIs).

Our Ensemble Packet Director, part of our advanced Ensemble Controller network management and control solution suite, streamlines the end-to-end delivery and maintenance of packet services. With automated path computation and powerful GUIs, end-to-end services can be provisioned in minutes without the need to explicitly configure intermediate nodes. This includes the configuration of service attributes, OAM requirements and service activation testing. Service level agreements (SLAs) are continuously monitored by comprehensive data collection and reporting on relevant performance metrics. This high level of automation in combination with clear user interfaces is key to fast and efficient operations with minimum human error.



ENSEMBLE PACKET DIRECTOR

High-level technical specifications

Service provisioning

- End-to-end service provisioning
- Rapid service activation with pre-defined defaults
- Graphical, intuitive user interface
- Provisioning progress indication and report of errors/success
- Automatic rollback of service from the network upon failure

Ethernet service topologies

- E-Line, E-Access, Transit E-Line, E-LAN
- Port-based (EPL)
- VLAN-based (EVPL)
- End-to-end service activation
- Link aggregation groups
- ITU G.8032 ERP protected
- Services with MACsec encryption

Service visualization

- Graphical display
- Detailed information of service components on network elements
- Listings
- Physical layer details

Service assurance

- Inventory management
- Performance monitoring and SLA compliance monitoring and reporting
- Y.1564 service activation testing and birth certificate generation

Fault management

- Alarm and Events lists
- Mapping of alarms to devices and device failures
- Indication of service status

Applications in your network

Provisioning packet networks with a single end-to-end network management solution

- Fast and efficient activation of new services reduces time-to-revenue
- Comprehensive alarm management functions for initiation action and real-time reporting
- Immediate fault identification with effective performance monitoring
- Seamless operation with full integration into Ensemble Controller solution suite

